



SEWING FRENCH SEAMS

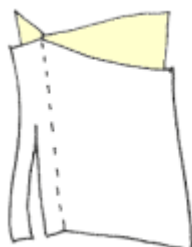
QUICK REFERENCE GUIDE

www.makewithmk.co.uk

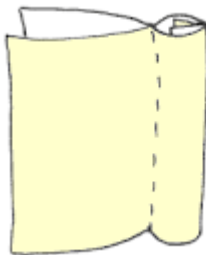
1.5cm FRENCH SEAMS

French seams are self-encasing seams where raw edges are completely enclosed. They are particularly suited for use on lightweight & sheer fabrics giving a professional finish with reduced bulk.

Place fabric pieces with wrong sides facing together. With fabric edges aligned, pin and stitch a 10mm/1cm seam allowance. Trim seam allowance down to 3mm and press seam to one side.



Bring sides of fabric over sandwiching seam between. Pin and stitch 5mm seam allowance. Finish by pressing your new French seam.



Fabric Wrong Side 

Fabric Right Side 

NB: Reduce stitch length for lightweight fabrics.

Did you know that in French, they call it this “couture **anglaise**”, which means “English **seam**”?